



Hindhayes Infant school

**Hindhayes Infant
School Attendance
Whole School 92.2%**

**Chestnut was the class
with the highest
attendance with
96.3%**

Diary Dates

**Happening After Half
Term:**

01/11/21—INSET day

04/11/21—Diwali
Workshops for children

04/11/21 - Bonfire Bingo:
Pizzas 5-6pm
Bingo: 6.15pm

3/12/21 - Non uniform
day—raffle prize donation

14/12/21 - Christmas Play

15/12/21 - Reindeer Run

16/12/21 – Winter Fayre

17/12/21 - Christmas
Jumper Day

At School This Week

At the beginning of the week it was lovely to welcome some special visitors to our assembly. Building on from this term's theme of Hindhayes, kind ways and giving to others during harvest it was great for the children to hear more of these messages within our whole school assembly. John and Louise Melia from Street Salvation Army came to talk to the children about the work that they do and have done recently to support local families who may find themselves needing their support. The children listened carefully to their messages and were delighted to see all of the wonderful donations being taken away so that they could be used to help others.

Earlier this week we sent out a letter to you with information about the school's current position with COVID. I am sure you will all know by now that where possible we do not send paper copies of letters out to families. All information is either in our weekly newsletter, on the school website or is emailed. Therefore it is very important that we have current and up to date email addresses for you all. The COVID information is at the end of the newsletter for you just in case. We have also included a flow chart that will help you to know when to isolate. Please remember that we also have a COVID section on the school website where you can find our most up to date COVID risk assessment and gain access to home learning links should your child need to isolate.

We have finished off the week with a spook-tacular treat. Thank you for helping the children with their non-uniform today and for all the wonderful donations of chocolate and items that we can raffle. Thanks to the help of Katie Ross, Hamish and Rufus' lovely Mum from Chestnut class these items are all now ready to share with you at our Bonfire Bingo on November 4th.



After Half Term

Please remember that on Thursday 4th November the children will all have the opportunity to take part in a special day of dance, in celebration of the festival of light. Thank you to those parents who have already paid their donation of £3.50 for towards the cost of this event.

And Finally

Thank you once again for your support this term. I hope that your child has some top learning highlights from the last seven weeks. Mine would have to be the school disco. Happy half term.



Lets Celebrate



We are delighted that we will be able to begin celebrating the learning that the children have been completing in the classroom once again. Congratulations to all those pupils who have achieved so well in their learning this week and have been chosen to receive certificates.

Work of the week: Cooper Jessop, Gracie-Faye Turner, Rosy Abduli, Faeryn Callow, Harper-Lilly Garner-Hamilton, Lillie Burridge, William Poole, Mila Holland, Nieve Guy-Gibbens, Elsie Owen, Ayda Brook, Kara Pope, Noah Newick & Luca Warren

Better Learning Powers: Grace Tozer, Isabel Otobicu, Florence Adams, Blake Hall, Jaydan Swain, Bobby Lamb, Bea Rayner, Joe Lister, Mark Holloway, Esmee Benney, Owen Lee, Karter Lintern, Ridley Cook & Lily-Rose Gibbs.

Messages from the Hindhayes Staff

Thank you to R4 Scaffolding

We would like to send a big thank you to everyone at R4 Scaffolding for the kind donation of some scaffolding planks and cable drums for our Forest School area.

Governor Vacancy

Dear Parents and Carers. We still currently have two vacancies for Governors on our Governing Board at Hindhayes Infant School. If you know of anyone who may be interested in these important roles and they want to know more, we can send a letter, with further information and a Nomination Form. The new closing date to receive nominations is Thursday 11th November 2021. There is also further information on the school's Facebook page, Parent Mail as well as our website. Alternatively, please feel free to contact Mike Sales in the school office via email on MSales@Educ.Somerset.Gov.uk Thank you

Mrs Shakesby's Recommended Story

Room On The Broom —Julia Donaldson



<https://www.hindhayes.co.uk/page/?title=October+22nd+%2D+Room+On+The+Broom&pid=577>

Look out for more stories coming each Friday.



FOR CONTINGENCY FRAMEWORKFOR TESTING: Visit <https://www.gov.uk/get-coronavirus-test> or call 119.SCC Public Health Contact: 01823 356100 / SCCPHIncidentRoom@somerset.gov.ukPHE CONTACTS: 08000 468687 / 2616PT@PHE.gov.ukSSE SCHOOLS TOOLKIT: [COVID-19 School Toolkit | Support Services for Education](#)**Baseline**

0 – 4 cases of covid19

Use your own Outbreak Management Plan.

If you need advice or support, contact the DfE advice line on 0800 046 8687.

For unusual situations, contact your local authority.

Control measures:

- Follow and promote public health guidance on testing, self-isolation and managing confirmed cases of COVID-19
- Setting based contact tracing of staff cases (See single case flowchart)
- Good hygiene measures
- Maintain appropriate cleaning regimens
- Keep occupied spaces well ventilated
- Appropriate use of PPE
- Deliver strong messages about signs and symptoms of covid19
- Encourage vaccination uptake for eligible students
- Maintain asymptomatic testing rates

For management of single possible or confirmed cases use single case flowchart

Comms:
Manage within school management plan**Additional**

5 cases / 10% of pupils who are likely to have mixed closely, test positive for COVID-19 within a 10-day period.

Please contact SCC PH/ PHE to review and put additional measures in place.

Additional control measures:

Refer to your Outbreak management Plan and in collaboration with public health use additional measures:

- Enhanced Cleaning where more cases
- Strengthen communications to encourage pupils to undertake twice weekly LFD testing, reinforce advice on symptoms and case isolation
- Move activities outdoors or consider stopping gatherings of large groups
- Further improvement of ventilation
- One off enhanced cleaning
- Review and enforcement of hygiene measures
- Promote vaccination uptake

Comms:

School issues warn and inform letters to identified group

Advise school to provide outbreak information to whole setting community

If the child is in the setting – isolate away from others and send home.
(Refer to PPE guidance if personal care is required within 2m)**Enhanced**

Evidence of established transmission within the setting, rise in cases or There are multiple groups that meet threshold

Please contact SCC PH Team/ PHE to complete a risk assessment and consider use of enhanced outbreak control measures:

Enhanced control measures:

- Increased frequency of LFD testing, possibly daily testing for defined cohort.
- Promoting social distancing and reducing crowding. May include reducing the number of children gathering
- Recommend a one-off PCR test for setting contacts
- Introduce methods to reduce intergroup mixing e.g. staggered entry / breaks / lunch
- Reduce mixing of staff by holding meetings virtually
- Temporary reinstating face coverings in communal areas
- Limitation of residential educational visits, open days, transition, and taster days. Live performances and parental

Comms:

School issues revised warn and inform letters setting wide

Exceptional

Ongoing established transmission

Exceptional measures required to break within setting transmission. Joint risk assessment education and public health, via OCT

Exceptional control measures:

- Reinstate on site LFD testing
- Consider genomic sequencing of an identified group
- Attendance restrictions

Comms:

via OCT minutes LA education SCC PH and PHE RSC

For special schools, residential settings, and settings that operate with 20 or fewer children, pupils, students, and staff at any one time:

≥2 children, pupils, students, and staff, who are likely to have mixed closely, test positive for COVID-19 within

Contact Public Health England
(08000 468687 / 2616PT@PHE.gov.uk)

If the child is in the setting – isolate away from others and send home.

(Refer to PPE guidance if personal care is required within 2m)

COVID-19 symptom definition:

- High temperature
- A new, continuous cough
- A loss of, or change to, your sense of smell or taste

Infectious Period:Two days before the onset of symptoms to 10 days after onset.
If case has no symptoms but a positive test, treat the two days prior to test AND 10 DAYS POST TEST DATE as the infectious period**Case definitions:****Possible case:** A child or staff member with a new continuous cough and/or high temperature and/or loss of, or change in, normal sense of taste or smell (anosmia) prior to testing.**Confirmed case:** PCR or LFD positive case with or without symptoms.**Close contacts of confirmed case:** A close contact of a confirmed case should get a PCR test to find out if been infected.**LFD testing:** Seek a follow up PCR test following an LFD positive test at home or at an assisted site. Case, household and contacts identified in the setting should isolate whilst waiting for the PCR result. If the PCR is negative, and the case remains symptom free, case and contacts can stop isolating.**NB:** If any staff or pupils develop COVID19 symptoms, always seek a PCR test. LFD tests should not be used on people with symptoms.

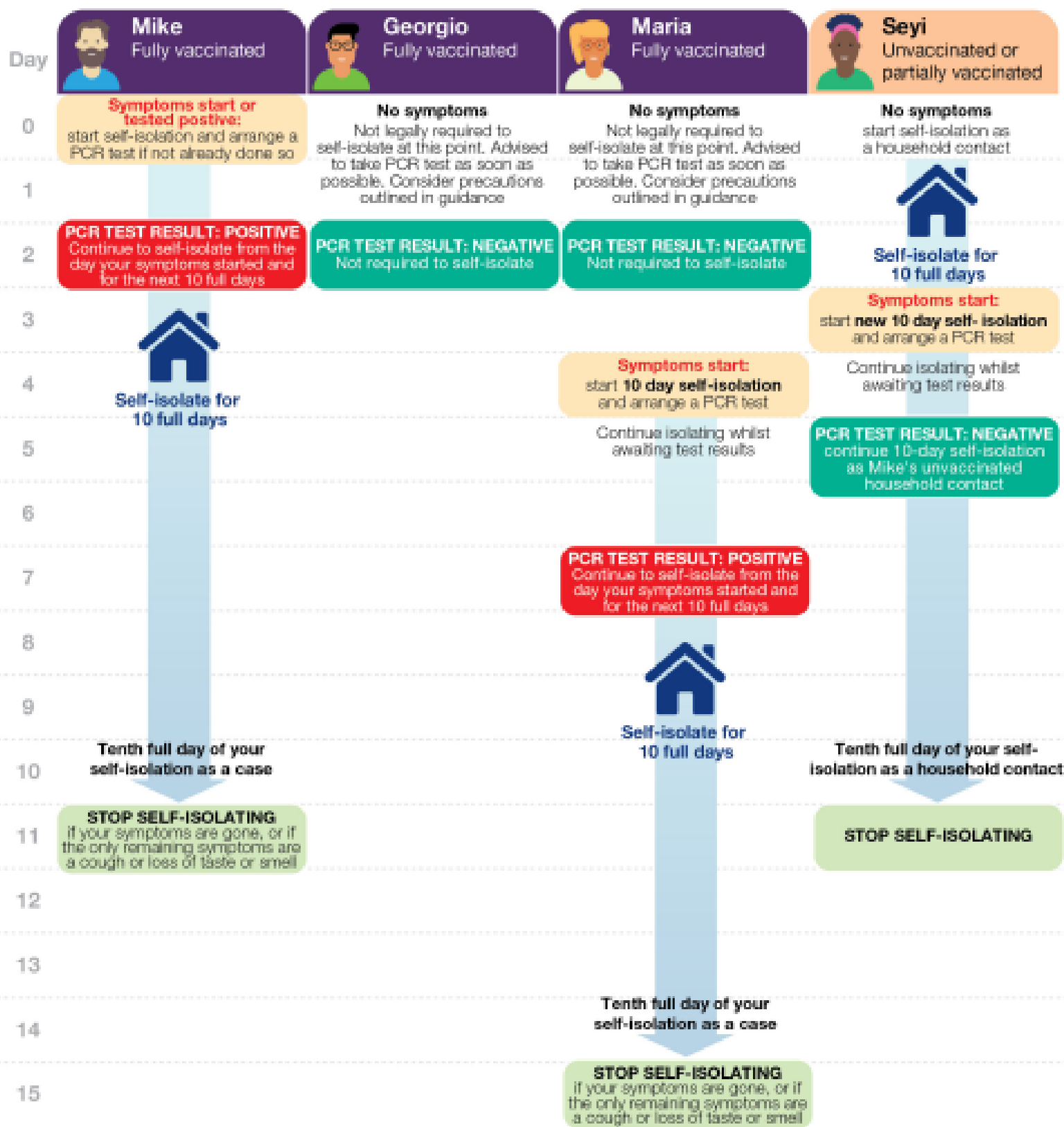


UK Health
Security
Agency

Stay at home and self-isolate.

Please see [detailed guidance online](#).

In this household, Mike lives with Georgio, Maria and Seyi. Mike is the first case of COVID-19 in this household and is required to self-isolate. This illustration provides examples of when other household members would, or would not need to self-isolate.



Self-isolate for 10 full days.

You need to self-isolate from the day the first person in your household started symptoms and for the next 10 full days. If they did not have symptoms, self-isolate from the day of their test and for the next 10 full days.

To self-isolate means:

Do not go to work, school, or public areas and do not use public transport or taxis. Only leave your home to get to your test if you need to, observe strict social distancing advice and return immediately afterwards.

See

[detailed guidance online](#)
for contacts that
are not required to
self-isolate.