



Hindhayes Infant school

Hindhayes Infant School Attendance Whole School 90.3%

Beech was the class with the highest attendance with 96.3%

Diary Dates:

Happening Next Week:

19/12/21 - Wear something sparkly for Children in Need

Happening in December:

3/12/21 - Non uniform day—Christmas Fayre donation

10- Rudolph Run and all Christmas Cups returned to school

13/12/21— Christmas Play Dress Run all costumes required in school

14/12/21 - Christmas Play

15/12/21 - Night Before Christmas Workshop

16/12/21 – Winter Fayre

17/12/21 - Christmas Jumper Day and class parties

After Christmas holidays

4/01/22 - INSET day

12/01/22 - Flu Vaccines

At School This Week

Anti-Bullying Week:

This week began with the children being introduced to the theme of 'One Kind Word' for anti bullying week. The children watched 'Big Assembly' which had been put together by the team at CBBC and they also heard other Primary aged children reminding them

- What bullying is
- What they should do if they think they are being bullied
- Who they could talk to if they were worried about being bullied
- What they should do if they thought a friend was being bullied
- What the role of an anti-bullying ambassador is

Across the rest of the week they have heard a range of lovely stories linked to accepting and celebrating the things that make us different. They have also tried really hard to think of kind words that they can say to others.

The theme of thinking of others will continue into next week as we plan to support the 'Children In Need' charity on Friday. We have decided to try to keep it as simple as possible by asking the children to wear something sparkly. They can wear sparkly shoes or socks with their uniform or go all out and wear a sparkly dress. Whatever they are wearing please ensure that they can still participate in their normal curriculum activities for the day e.g. forest school and PE. If you would like to make a donation of £1 we will be happy to collect those through the school office. If we have a donation from all our families that will raise £200 and go towards those who need it most.



Parent and Teachers Fund Raising Group

It was lovely to meet with some parents on Thursday evening who have very kindly offered to help support the teachers with some fundraising events this year. At the meeting it was decided that Katie Ross (Mum to Hamish and Rufus in Chestnut class) would move forward as Chair of the group and Daisy Hunt (Mum to Magnus in Oak class) would be the group's treasurer. Apologies to a couple of people who couldn't join the virtual meeting last night. Hopefully the next one will be in person and in school time. We will let you know the date and time once it has been decided. You will see that the left hand column of upcoming dates is filling up, next week we will be sending home information about our plans for the festive end to the term. Until then, please put the dates in your diary!

COVID update

As of 12.00p.m. today we have had no changes to the present COVID guidance. The local authority had said that these restrictions may have been needed beyond the two week period. Rest assured that numbers in the local area are on the decline and so we are going in the right direction. We have to hope that a rubbish November will mean a brighter December. Please do continue to be patient with the team while we implement what we are told to. We are aware that the Victoria Club Lane is a very busy point for the children to be exiting on to and so once again I would ask you, where possible to walk and not drive to school so that there is less traffic. I would also urge you to not allow your child to cycle or scoot up or down the lane and to hold their hand at all times. This is a very busy side road. Of course if we hear anything further over the weekend or on Monday we will let you know as soon as we do. Thanks.

<https://www.supportservicesforeducation.co.uk/Article/89889>



Lets Celebrate



We are delighted that we will be able to begin celebrating the learning that the children have been completing in the classroom once again. Congratulations to all those pupils who have achieved so well in their learning this week and have been chosen to receive certificates.

Work of the week: Daisy Birch, Harper-Lilly Garner-Hamilton, Theo Hylton, Kara Wood, Eloise Priddle, Grace Tozer, Kenzie Payne, Lillian Overton, Georgia Thomson, Thomas Herbert, Brooke-May Josling, Holly Paisey, Karmyn Curry & Aidan Holloway

Better Learning Powers: Rudy Perry, Talia Crossman, Merve Sen, Hannah Cieplak, Ebony-Rose Blake, Wren Jefferies, Shakira Mehmet, Edward Pickford, Robert Seaward, Willow Malpass, Owen Lee, Alisha Rabbitts, Bryony Unger & Noah Melia

Messages from the Hindhayes Staff

Adverse Childhood Experience

Dear parents and carers

Please use this link to apply for a place on the course about Adverse Childhood Experiences:

https://choices.somerset.gov.uk/025/send-news/learn-more-about-adverse-childhood-experiences-free-event/send-news/?utm_source=mailpoet&utm_medium=email&utm_campaign=send-news-111121

Donations to EYFS

The EYFS team are looking for donations of old toy prams, toy pushchairs, children's wheelbarrows or trolley style toys for use in our outdoor area. If you think you have something suitable please pass it on to your child's class teacher. Thanks in advance!

FSM/Pupil Premium Form:

Thank you to those families who have completed the FSM/Pupil Premium Form. As you'll be aware these need to be completed to see if you are eligible and for the school to receive the funding it needs. Being entitled to FSM/Pupil Premium will mean that the school will receive up to an additional £1,345 per child per year and with budgets being incredibly tight every eligible child/family makes a significant difference. As you have seen food vouchers for those FSM families were allocated for the Summer and October holiday periods and it is envisaged that there will be Government funding for the Christmas period also. If you haven't completed a form, think your circumstances have changed or just want to check there is a link to an online form below which goes straight to colleagues at County Hall. The form is straightforward and takes a couple of minutes to complete. Alternatively, if you'd prefer to complete a paper form please see Scott or I in the Office and we'll help you complete and send off on your behalf.

If there are any questions please email us on Hindhayes@educ.somerset.gov.uk

https://secure1.somerset.gov.uk/forms/PortalShowForm.asp?fm_formalias=freeschoolmeal

Mrs Shakesby's Recommended Story

After The Storm—Nick Butterworth

<https://www.hindhayes.co.uk/page/?title=November+12th+%2D+After+the+storm&pid=600>

Look out for more stories coming each Friday.



FOR CONTINGENCY FRAMEWORK

FOR TESTING: Visit <https://www.gov.uk/get-coronavirus-test> or call 119.

SCC Public Health Contact: 01823 356100 / SCCPHIncidentRoom@somerset.gov.uk

PHE CONTACTS: 08000 468687 / 26VHPT@PHE.gov.uk

SSE SCHOOLS TOOLKIT: [COVID-19 School Toolkit | Support Services for Education](#)

Baseline

0 – 4 cases of covid19

Use your own Outbreak Management Plan.

If you need advice or support, contact the DfE advice line on 0800 046 8687.

For unusual situations, contact your local authority.

Control measures:

- Follow and promote public health guidance on testing, self-isolation and managing confirmed cases of COVID-19
- Setting based contact tracing of staff cases (See single case flowchart)
- Good hygiene measures
- Maintain appropriate cleaning regimens
- Keep occupied spaces well ventilated
- Appropriate use of PPE
- Deliver strong messages about signs and symptoms of covid19
- Encourage vaccination uptake for eligible students
- Maintain asymptomatic testing rates

For management of single possible or confirmed cases use single case flowchart

Comm:
Manage within school management plan

Additional

5 cases / 10% of pupils who are likely to have mixed closely, test positive for COVID-19 within a 10-day period.

Please contact SCC PH/ PHE to review and put additional measures in place.

Additional control measures:

Refer to your Outbreak management Plan and in collaboration with public health use additional measures:

- Enhanced Cleaning where more cases
- Strengthen communications to encourage pupils to undertake twice weekly LFD testing, reinforce advice on symptoms and case isolation
- Move activities outdoors or consider stopping gatherings of large groups
- Further improvement of ventilation
- One off enhanced cleaning
- Review and enforcement of hygiene measures
- Promote vaccination uptake

Comm:

School issues warn and inform letters to identified group

Advise school to provide outbreak information to whole setting community

If the child is in the setting – isolate away from others and send home.
(Refer to PPE guidance if personal care is required within 2m)

Enhanced

Evidence of established transmission within the setting, rise in cases or There are multiple groups that meet threshold

Please contact SCC PH Team/ PHE to complete a risk assessment and consider use of enhanced outbreak control measures:

Enhanced control measures:

- Increased frequency of LFD testing, possibly daily testing for defined cohort.
- Promoting social distancing and reducing crowding. May include reducing the number of children gathering
- Recommend a one-off PCR test for setting contacts
- Introduce methods to reduce intergroup mixing e.g. staggered entry / breaks / lunch
- Reduce mixing of staff by holding meetings virtually
- Temporary reinstating face coverings in communal areas
- Limitation of residential educational visits, open days, transition, and taster days. Live performances and parental

Comm:

School issues revised warn and inform letters setting wide

Exceptional

Ongoing established transmission

Exceptional measures required to break within setting transmission. Joint risk assessment education and public health, via OCT

Exceptional control measures:

- Reinstate on site LFD testing
- Consider genomic sequencing of an identified group
- Attendance restrictions

Comm:

via OCT minutes LA education SCC PH and PHE RSC

For special schools, residential settings, and settings that operate with 20 or fewer children, pupils, students, and staff at any one time:

≥2 children, pupils, students, and staff, who are likely to have mixed closely, test positive for COVID-19 within

Contact Public Health England
(08000 468687 / 26VHPT@PHE.gov.uk)

If the child is in the setting – isolate away from others and send home.

(Refer to PPE guidance if personal care is required within 2m)

COVID-19 symptom definition:

- High temperature
- A new, continuous cough
- A loss of, or change to, your sense of smell or taste

Infectious Period:

Two days before the onset of symptoms to 10 days after onset.

If case has no symptoms but a positive test, treat the two days prior to test AND 10 DAYS POST TEST DATE as the infectious period

Case definitions:

Possible case: A child or staff member with a new continuous cough and/or high temperature and/or loss of, or change in, normal sense of taste or smell (anosmia) prior to testing.

Confirmed case: PCR or LFD positive case with or without symptoms.

Close contacts of confirmed case: A close contact of a confirmed case should get a PCR test to find out if been infected.

LFD testing: Seek a follow up PCR test following an LFD positive test at home or at an assisted site. Case, household and contacts identified in the setting should isolate whilst waiting for the PCR result. If the PCR is negative, and the case remains symptom free, case and contacts can stop isolating.

NB: If any staff or pupils develop COVID19 symptoms, always seek a PCR test. LFD tests should not be used on people with symptoms.

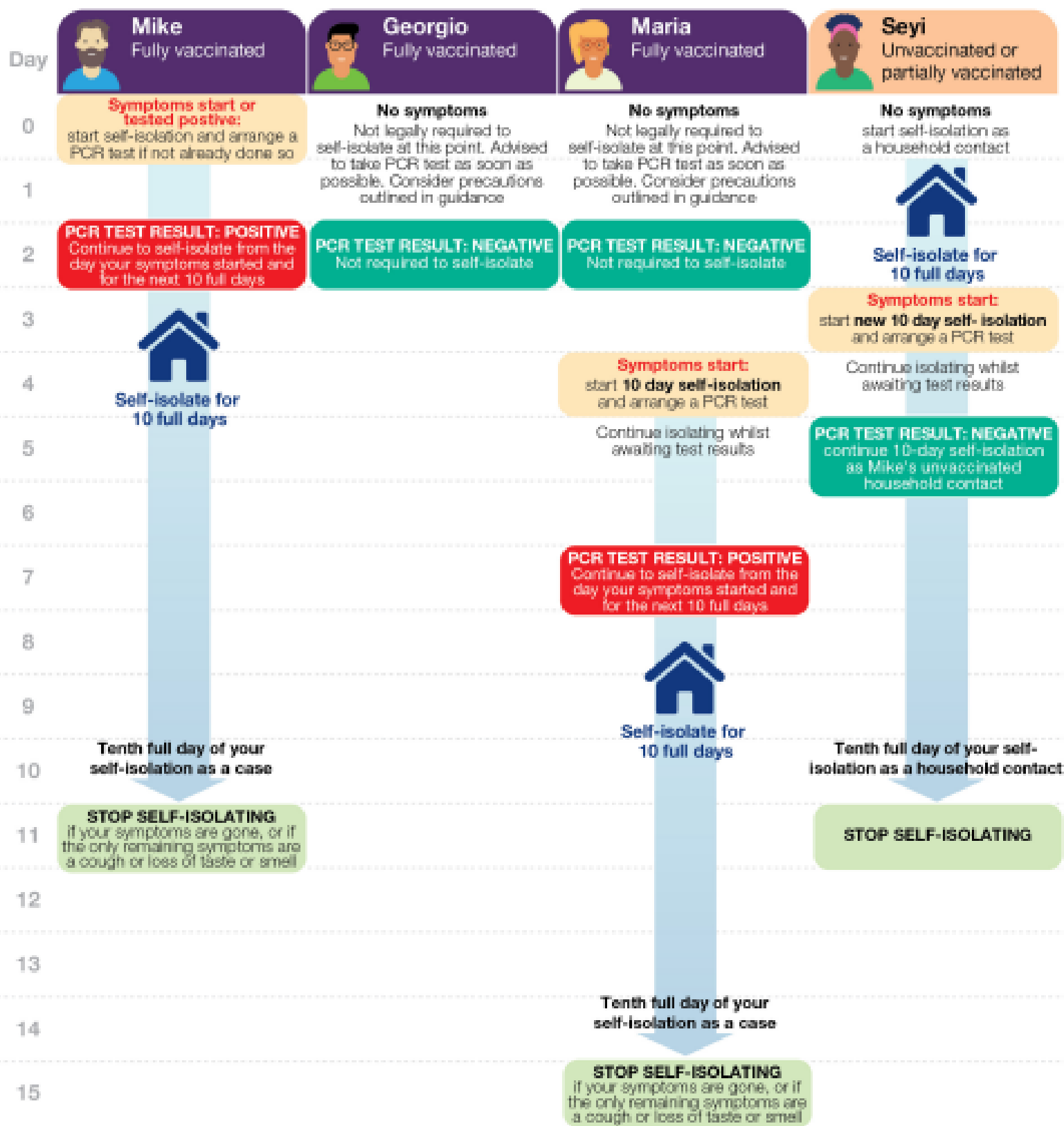


UK Health
Security
Agency

Stay at home and self-isolate.

Please see [detailed guidance online](#).

In this household, Mike lives with Georgio, Maria and Seyi. Mike is the first case of COVID-19 in this household and is required to self-isolate. This illustration provides examples of when other household members would, or would not need to self-isolate.



Self-isolate for 10 full days.

You need to self-isolate from the day the first person in your household started symptoms and for the next 10 full days. If they did not have symptoms, self-isolate from the day of their test and for the next 10 full days.

To self-isolate means:

Do not go to work, school, or public areas and do not use public transport or taxis. Only leave your home to get to your test if you need to, observe strict social distancing advice and return immediately afterwards.

See

[detailed guidance online](#)
for contacts that
are not required to
self-isolate.