



**Baseline 0-4 cases**

**Living with COVID 19**

**Outbreak Management Plan**

**STAY ALERT ▶ CONTROL THE VIRUS ▶ SAVE LIVES**

Use your own outbreak management plan  
Call DfE Advice Line if concerned: 0800 046 8687

Approved on: \_\_\_\_\_

Signed: Kate Nester

Role: Head Teacher

### **1. Introduction:**

The Hindhayes staff and community have now lived with COVID 19 since March 2020. The impact has been felt across two academic years. Teachers and pupils have responded without question to ensure that the quality of the education provided whether in the classroom or remotely has been of the high standard that we expect when the world is not in the middle of a pandemic. National lockdowns calling for child care and an ongoing education for those keyworkers working at the frontline has supported emergency services to keep our local world turning. None of us could have predicted the demands that have been placed on schools and the teaching profession. Now we must plan to live with COVID and we hope that this reduced risk assessment will enable us to do that.

### **2. Risk Assessment Aims:**

The risk assessment will continue to be reviewed regularly by the Head Teacher. The Chair of Governors through site visits, governor meetings and ongoing reporting will monitor it. Staff will publish the risk assessment in the COVID section of the school website.

The aim of the risk assessment is to:

- Reflect the schools interpretation of the national guidance published by the DfE
- Keep the school community healthy
- Ensure consistent attendance for the pupils
- Reflect the schools response to the requirement of either a step up or step down

### **3. Roles and Responsibilities:**

Governors: to monitor the implementation of the risk assessment

Head Teacher: To update and ensure the implementation of the risk assessment

School staff: To read and work in support of the requirements of the risk assessment

Parents: To ensure that they follow any adjustments that the school have to make to fulfil the requirements of the risk assessment

Pupils: To follow the routines implemented by the school staff

### **4. Communication:**

Senior staff will continue to ensure a quick response to all documentation published as the country moves on to live with COVID. The Head Teacher will continue to attend local authority updates to share and shape our good practice.

### **5. Cleaning:**

- It is important that an enhanced level of cleaning is maintained at all times
- Staff may be required to clean resources with classroom antibacterial resources in the middle of the day
- Ensure that their continues to be antibacterial resources available such as soap, spray and wipes.
- Antibacterial fumigator to be used in high traffic areas e.g. the main entrance and school hall at the end of the school day

### **6. Personal Hygiene:**

- A continued focus on 'Catch it, bin it, kill it' to curb the spread of unwanted germs
- A continued focus on effective and regular hand washing
- A requirement for anyone who has COVID symptoms to stay at home and be tested given the continued potential risk to others
- Well ventilated shared spaces such as the hall
- Adults working in schools continuing to use lateral flow tests
- Monitor the impact of the use of shared areas such as the hall for e.g. lunchtimes, assembly and PE



### **7. Provision of Remote Learning**

Hindhayes will continue to provide the ability to move between remote learning and the classroom for the next year in the event that

- A child may need to work from home if they have tested positive for CV19 but are well enough to work
- If there is a localised lockdown that requires a step up

Due to this SLT

- continue to prioritise the need for any ongoing professional development of the Hindhayes teaching team
- continue to remain up to date with the ongoing developments associated with remote learning e.g. any new , or more appropriate resources
- will ensure the needs of SEND pupils are met through appropriate adjustments

### 8. Public Health Advice on Testing and Self isolation

When an individual develops COVID-19 symptoms or has a positive test pupils, staff and other adults should follow public health advice on when to self-isolate and what to do. They should not come into school if they have symptoms, have had a positive test result or other reasons requiring them to stay at home due to the risk of them passing on COVID-19 (for example, they are required to quarantine due to being a close contact).

From 16 August 2021 if another member of the household has been identified as a close contact, children under the age of 18 years old will no longer be required to self-isolate. Instead, children will be contacted by NHS Test and Trace, informed they have been in close contact with a positive case and advised to take a PCR test. We would encourage all individuals to take a PCR test if advised to do so.

### 9. Lateral Flow Testing:

At this time, nearly all staff members have been double vaccinated. However, in line with national guidance there is a requirement for staff in schools to continue to use LFTs until the next government review in September 2021.

Those staff who are testing should continue to

- test on the designated days e.g. Sunday and Wednesday evening
- inform SLT of the result through the designated email address
- inform the Dfe through the online website
- follow the requirements of a positive LFT e.g. seek a PCR test for confirmation
- if well enough and where possible work from home
- inform the school office when they need further testing kits

Staff can stop testing once the summer term has ended. They should then resume testing twice a week in the week prior to the start of the school term.

### 10. Safeguarding Our School:

The school will remain vigilant to the increased impact of the COVID 19 pandemic on the safeguarding of our pupils and their families. The work of the PFSA, ELSAs and Learning Mentor will be prioritised to work where required. Families are and can be supported through periods of disruption and upset by our skilled and highly experienced team. We recognise that the world has been through a shared trauma that we have not yet fully processed.

### 11. At This Time

#### Children can

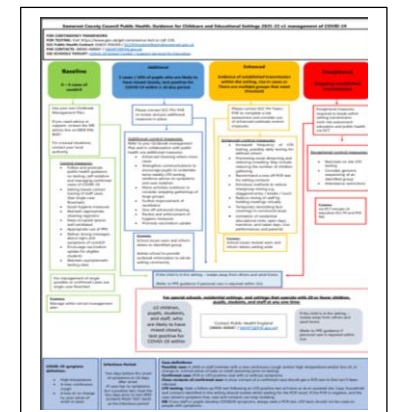
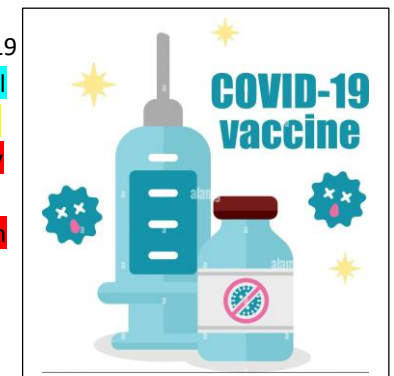
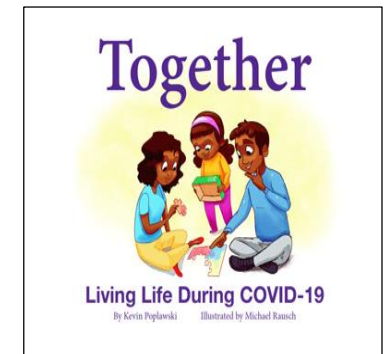
- play together and mix across classes
- use the outdoor play resources
- come together for whole school events
- have lunch together in the school hall

#### Staff can

- mix with other members of staff across class bubbles
- come together in one shared staff room
- work in school without a facemask
- continue to access lateral flow tests through the school
- return to working their normal school hours
- be vigilant to the ongoing number of CV19 cases
- undertake their own **baseline risk assessment**
- be ready to move to and work with PHE if CV19 cases require the school to move to **additional control measures, enhanced outbreak control measures** or **exceptional measures which may require the school to take action to break ongoing and established rates of transmission**

#### Parents can

- come into the school grounds
- visit and volunteer in school



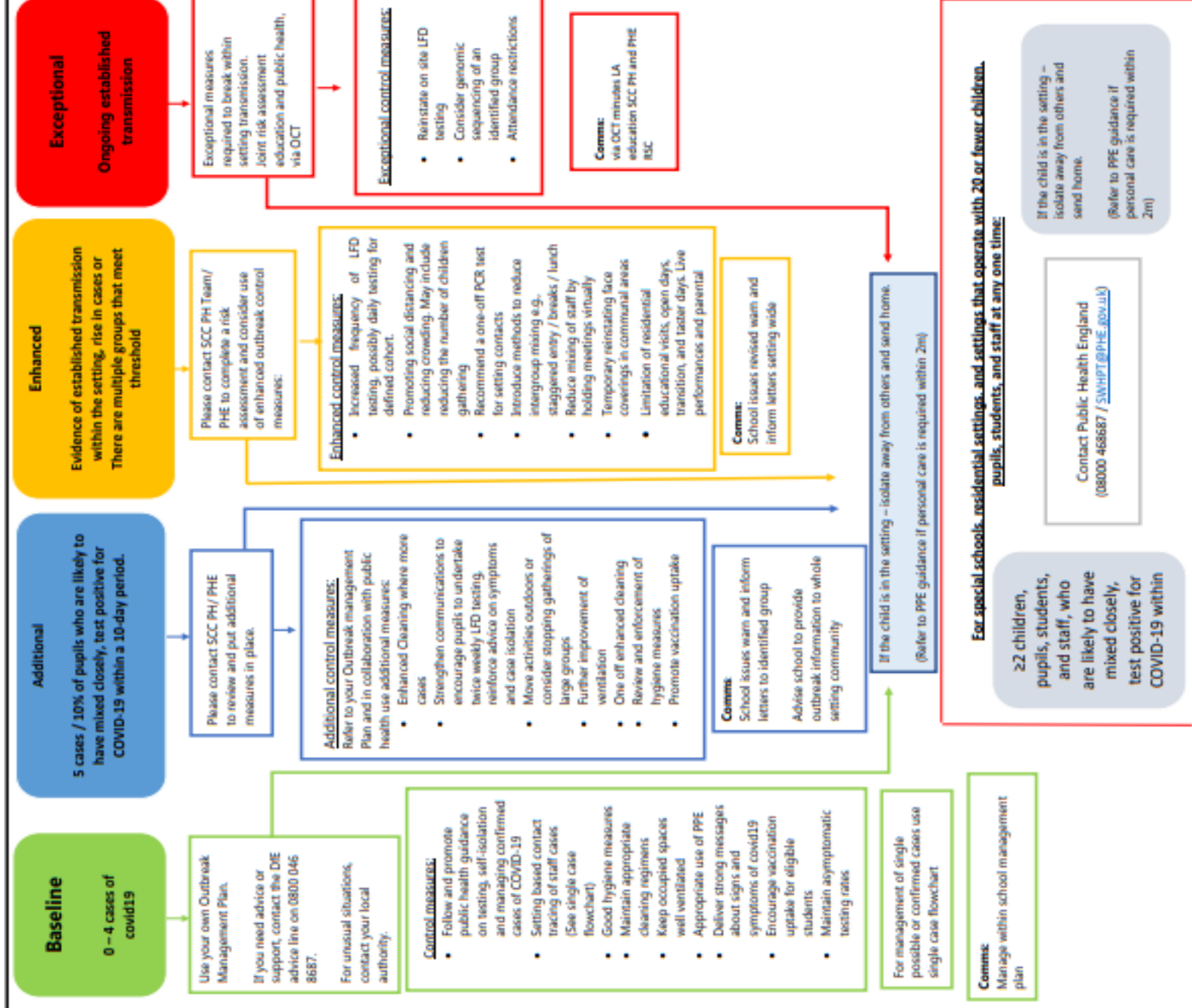
**FOR CONTINGENCY FRAMEWORK**

FOR TESTING: Visit <https://www.gov.uk/get-coronavirus-test> or call 119.

SCC Public Health Contact: 01823 356100 / [SCCPHincidentRoom@somerset.gov.uk](mailto:SCCPHincidentRoom@somerset.gov.uk)

PHE CONTACTS: 08000 468687 / [SWHPT@PHE.gov.uk](mailto:SWHPT@PHE.gov.uk)

SSE SCHOOLS TOOLKIT: [COVID-19 School Toolkit](#) | Support Services for Education



<p><b>COVID-19 symptom definition:</b></p> <ul style="list-style-type: none"> <li>High temperature</li> <li>A new, continuous cough</li> <li>A loss of, or change to, your sense of smell or taste</li> </ul>	<p><b>Infectious Period:</b></p> <p>Two days before the onset of symptoms to 10 days after onset</p> <p>If case has no symptoms but a positive test, treat the two days prior to test AND 10 DAYS POST TEST DATE as the infectious period</p>	<p><b>Case definitions:</b></p> <p><b>Possible case:</b> A child or staff member with a new continuous cough and/or high temperature and/or loss of, or change in, normal sense of taste or smell (anosmia) prior to testing.</p> <p><b>Confirmed case:</b> PCR or LFD positive case with or without symptoms.</p> <p><b>Close contacts of confirmed case:</b> A close contact of a confirmed case should get a PCR test to find out if been infected.</p> <p><b>LFD testing:</b> Seek a follow up PCR test following an LFD positive test at home or at an assisted site. Case, household and contacts identified in the setting should isolate whilst waiting for the PCR result. If the PCR is negative, and the case remains symptom free, case and contacts can stop isolating.</p> <p><b>NB:</b> If any staff or pupils develop COVID19 symptoms, always seek a PCR test. LFD tests should not be used on people with symptoms.</p>
---	---	---



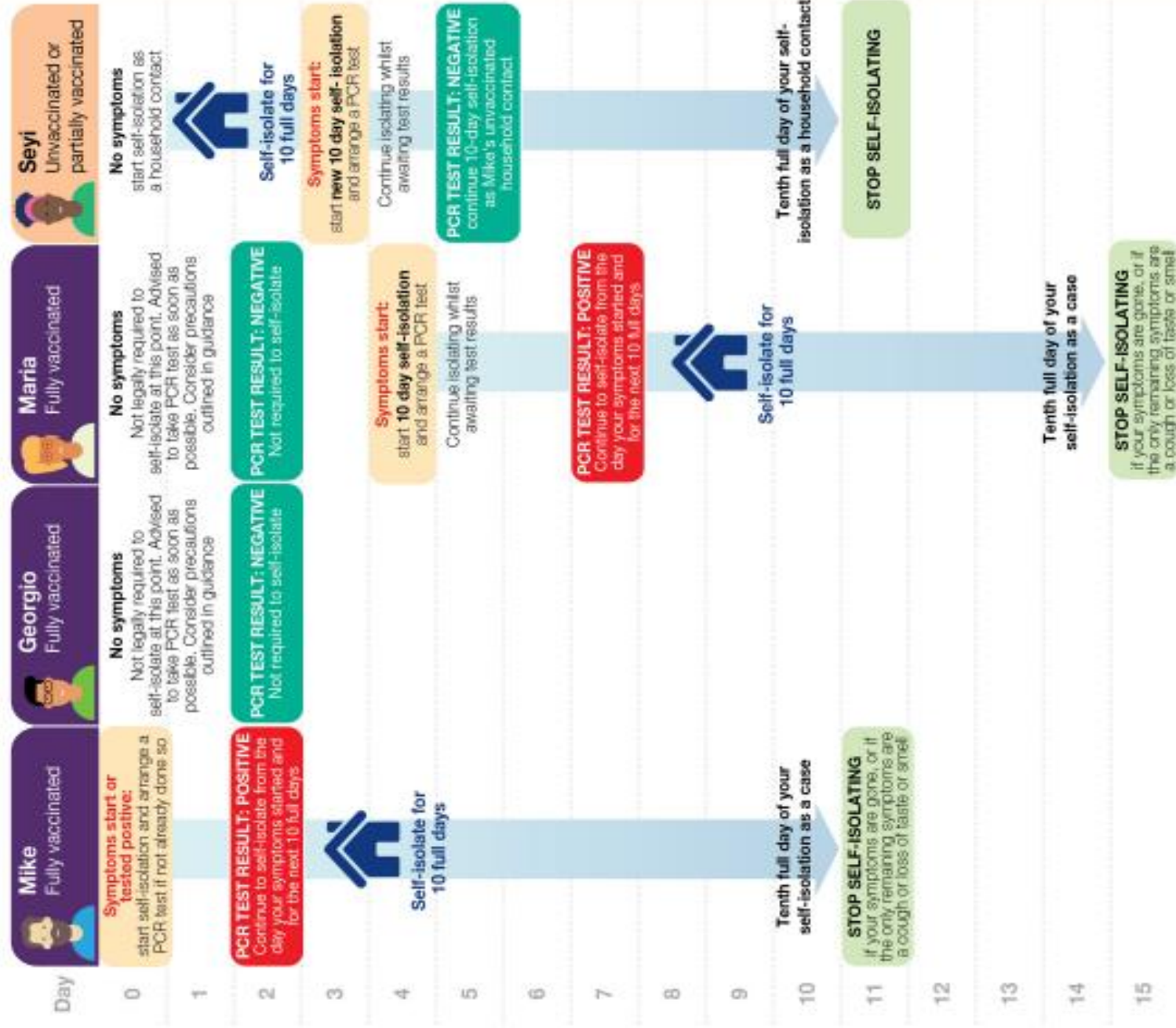


UK Health  
Security  
Agency

# Stay at home and self-isolate.

Please see [detailed guidance online](#).

In this household, Mike lives with Georgio, Maria and Seyi. Mike is the first case of COVID-19 in this household and is required to self-isolate. This illustration provides examples of when other household members would, or would not need to self-isolate.



## Self-isolate for 10 full days.

You need to self-isolate from the day the first person in your household started symptoms and for the next 10 full days. If they did not have symptoms, self-isolate from the day of their test and for the next 10 full days.

## To self-isolate means:

Do not go to work, school, or public areas and do not use public transport or taxis. Only leave your home to get to your test if you need to, observe strict social distancing advice and return immediately afterwards.

## See

[detailed guidance online](#)

**for contacts that are not required to self-isolate.**