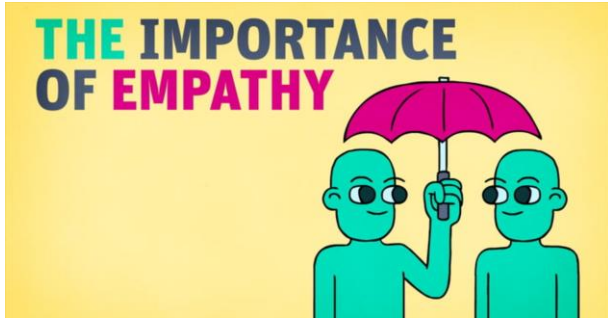
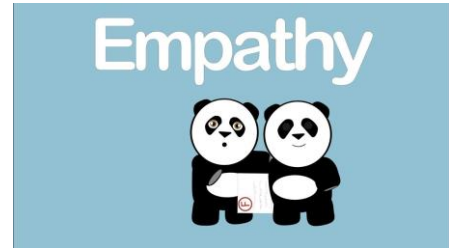


# Mrs Nester's Home Learning Weekly Challenge: 29<sup>th</sup> June 2020

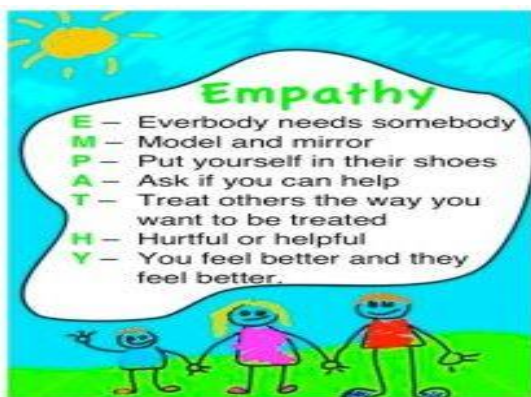
This month you have heard that has been national empathy month. At this time there has been a lot for us, young and old, to try to empathise with. Empathy is one of the key social skills that we need to try to manage. I wonder if you know what it is? If you show it to others or you can spot it in others?

1. Can you find out what empathy is? Can you talk about who shows empathy for others? Can you describe what it looks like?



2. Why is it important to show empathy to other people? What happens when you do? What would happen if you didn't?

3. There are lots of great stories that you can read where you can listen to how characters show empathy for each other. How many stories can you read at home that demonstrate this?



4. Can you write an acrostic poem using the word EMPATHY like the example that I have given you here.

What do you think the boy is saying to the girl?

Why do you think the girl is hiding?

What would you have done to help?

